

# DAB SERIES Outdoor Lighting

DAB-A16-50-100W-MCTP-SR  
16" DESIGNER AREA BELL LIGHT SYSTEM

**MCTP** Multi Color Temperature & Multi Power/Wattage (Selectable)



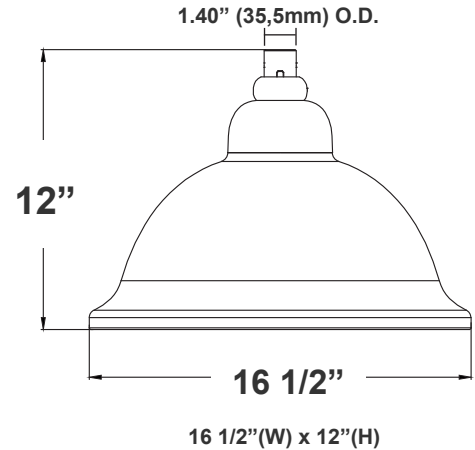
Ideal for airports, auto dealerships, corporate offices, education, government, healthcare, industrial warehouses, municipal parking, gas stations, convenient stores, recreation and public venues, restaurants, hospitality, retail and grocery stores.

Customer Name: \_\_\_\_\_

Project Name: \_\_\_\_\_

Note: \_\_\_\_\_

Type: \_\_\_\_\_



## Features

- AL1060 Aluminum Hosing, Outdoor Powder Coating
- 7-Year Warranty
- Multi CCT and Power: Selectable Switch Inside Of The Fixture

## Technical Specifications

### Electrical:

- Voltage: 100-277V AC 50/60Hz
- Wattage: 50W/80W/100W
- Power Factor: 0.9
- THD<20%
- Efficacy: 130LM/W

### Mechanical:

- AL1060 Aluminum Hosing, Outdoor Powder Coating
- Twist-Lock Zhaga Socket Pre-Installed. See Motion
- Sensor Accessories.
- 6' SJTW 18,3 AWG Power Cable
- 6' SJTW Dimming Cable
- Aluminum LED board: High Conductive, Waterproof, Aging Resistance, Salt eRsistance
- Programmable Bi-Level Motion Sensor & Emergency Backup Options
- Operating Temperature: -40°F~104°F
- IP Rating: IP66, Suitable for Wet Locations
- 7-Year Warranty

### Lighting:

- Multi CCT and Power: Selectable Switch Inside Of The Fixture
- Dimmable: 0~10V Dimming
- Lens: High Light Transmittance PC, anti-UV and Fire Resistant
- LED: Lumileds 2835
- Total Lumens: 13000LM Max.
- Color Temperature: 3000K/4000K/5000K
- Color Rendering index: >70
- Beam Angle: Type V (150° X 150°)
- Lifespan: 70000 Hrs.

### Applications:

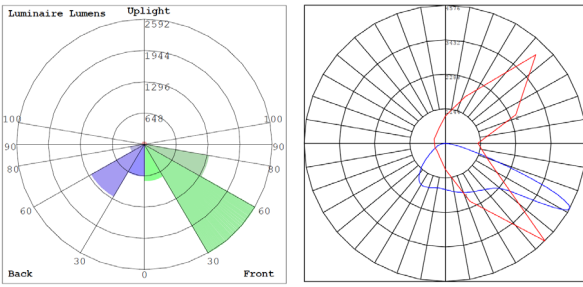
- Ideal For Garden, Amusement Park, Residential Quater , Industrial Park And Pedestrian street.

### Other Models:

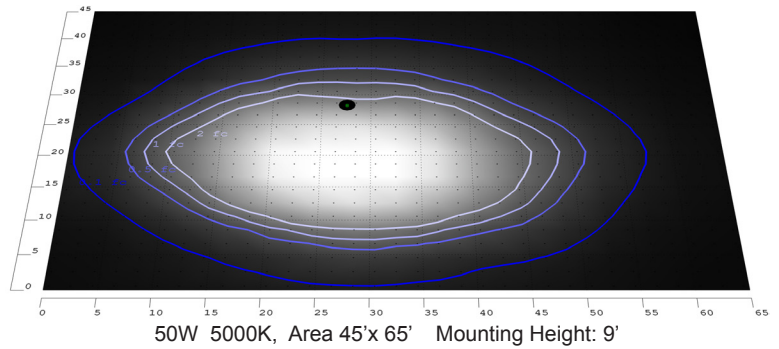
- 100W | 13000LM | DAB-B20-50-100W-MCTP-SR
- 150W | 19500LM | DAB-B23-80-150W-MCTP-S



**Photometrics:** DAB-A16-50-100W-MCTP-SR



BUD Rating: B3-U0-G2



**Performance Table:** DAB-A16-50-100W-MCTP-SR

MODEL NO.	Wattage	Voltage	Lumens	Color Temp.	BUG Rating	LPW
DAB-A16-50-100W-MCTP-SR	50W 80W 100W	120-277V	6500LM 10400LM 13000LM	3000K 4000K 5000K	B3-U0-G2	130

**Sample Ordering**

Model	Size	Watt	Max. Watt	Color Temp.
DAB	A16	50	100W	MCTP - SR

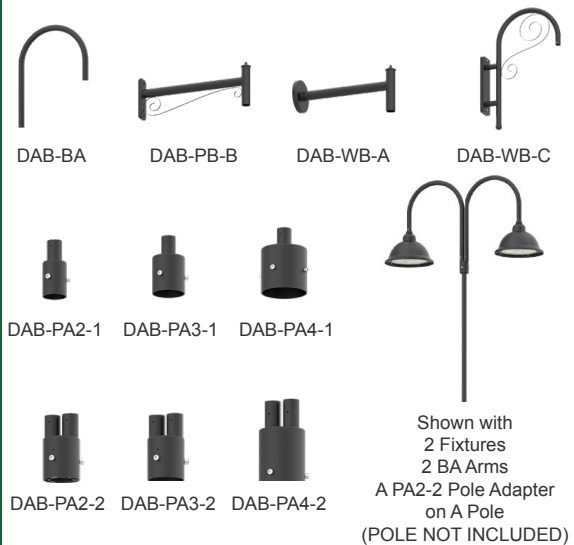
**Accessories:**

Blank = No Option  
 DAB-BA = DAB BELL ARM FOR MOUNTING ON SINGLE OR DOUBLE POLE ADAPTER, BLACK  
 DAB-PB-B = DAB DECORATIVE STRAIGHT POLE BRACKET MODEL B, FOR FLAT OR ROUND POLES, BLACK  
 DAB-WB-A = DAB STRAIGHT WALL BRACKET MODEL A, BLACK  
 DAB-PA2-1 = DAB 2in POLE ADAPTER FOR 1 BELL ARM, BLACK  
 DAB-PA2-2 = DAB 2in POLE ADAPTER FOR 2 BELL ARM, BLACK  
 DAB-PA3-1 = DAB 3in POLE ADAPTER FOR 1 BELL ARM, BLACK  
 DAB-PA3-2 = DAB 3in POLE ADAPTER FOR 2 BELL ARM, BLACK  
 DAB-PA4-1 = DAB 4in POLE ADAPTER FOR 1 BELL ARM, BLACK  
 DAB-PA4-2 = DAB 4in POLE ADAPTER FOR 2 BELL ARM, BLACK  
 DAB-WB-C = DAB BENT DECORATIVE WALL BRACKET MODEL C, BLACK  
 WEC-3MR-72-TLB-BK = 600W Max, ZHAGA 12-24VDC PIR SENSOR, BLACK, WITH BASE (OPTIONAL REMOTE CONTROL WEC-3RC)  
 WEC-3MBT-72-TLB-BK = 600W Max, ZHAGA 12-24VDC PIR SENSOR, BLACK, WITH BASE (OPTIONAL REMOTE CONTROL WEC-3RC)

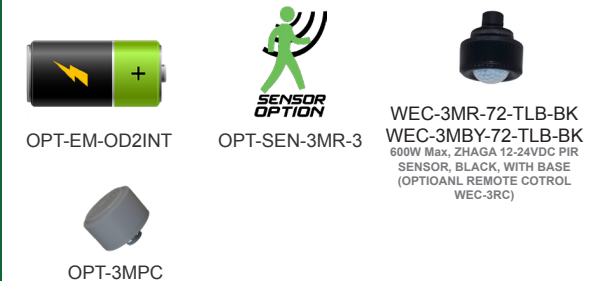
**Factory Installed Options:**

Blank = No Option  
 OPT-EM-OD2INT = INTERNAL EMERGENCY BACK UP BATTERY  
 OPT-3MPC = MICROWAVE PHOTOCELL  
 OPT-CLR-95(BK/GR/SR/WH) = COLOR PAINT

**ACCESSORIES:**



**FACTORY INSTALLED OPTIONS:**



# ACCESSORIES:



**DAB-BA  
DAB-PA2-2**

2in POLE + 16in fixture  
(double)

(Pole separate per job spec\*)



**DAB-BA  
DAB-PA3-2**

3in POLE + 16in fixture  
(double)

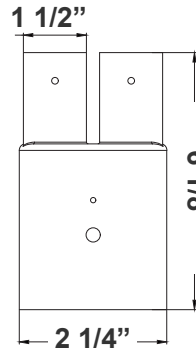
(Pole separate per job spec\*)



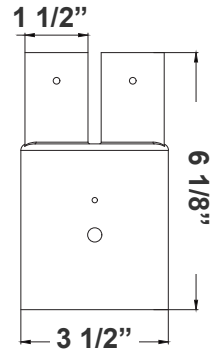
**DAB-BA  
DAB-PA4-2**

4in POLE + 16in fixture  
(double)

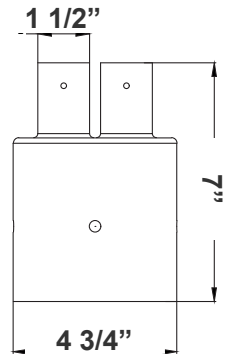
(Pole separate per job spec\*)



**DAB-PA2-2**  
2 1/4"(W) x 6 1/8"(H)



**DAB-PA3-2**  
3 1/2"(W) x 6 1/8"(H)



**DAB-PA4-2**  
4 3/4"(W) x 7"(H)



**DAB-BA  
DAB-PA2-1**

2in POLE + 16in fixture

(Pole separate per job spec\*)



**DAB-BA  
DAB-PA3-1**

3in POLE + 16in fixture

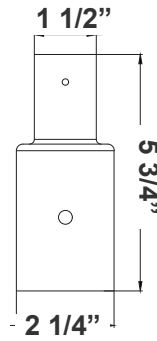
(Pole separate per job spec\*)



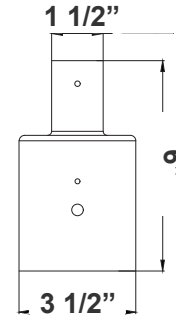
**DAB-BA  
DAB-PA4-1**

4in POLE + 16in fixture

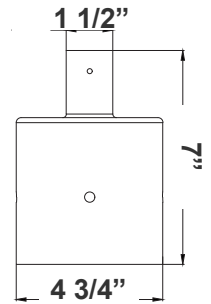
(Pole separate per job spec\*)



**DAB-PA2-1**  
2 1/4"(W) x 5 3/4"(H)



**DAB-PA3-1**  
3 1/2"(W) x 6"(H)



**DAB-PA4-1**  
4 3/4"(W) x 7"(H)



**DAB-BA**

2in POLE + 16in fixture head



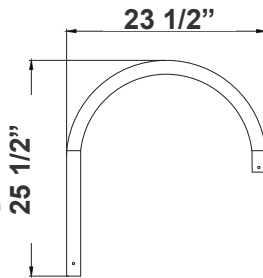
**DAB-BA**

3in POLE + 16in fixture head



**DAB-BA**

4in POLE + 16in fixture head

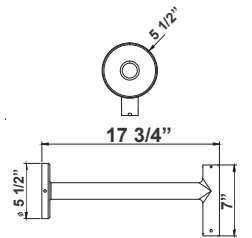


**DAB-BA**  
23 1/2"(W) x 25 1/2"(H)



**DAB-WB-A**

DAB-WB-A+16 in fixture  
for wall



**DAB-WB-A**

17 3/4"(W) x 7"(H) x 5 1/2"(D)



**DAB-PB-B**

DAB-PB-B+16 in fixture  
for pole

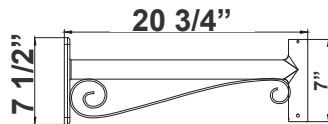
(Pole separate per job spec\*)



**DAB-PB-B**

DAB-PB-B+16 in fixture  
(double) for pole

(Pole separate per job spec\*)



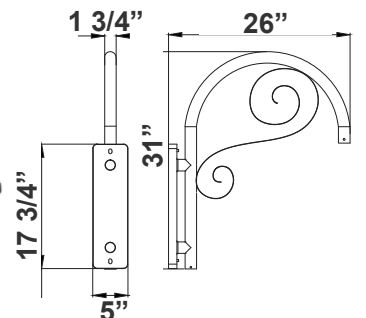
**DAB-PB-B**

20 3/4"(W) x 7 1/2"(H)



**DAB-WB-C**

DAB-WB-C+16 in fixture  
for wall



**DAB-WB-C**



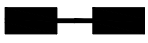
26"(W) x 31"(H) x 5"(D)



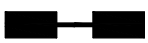
\*Decorative Arms & Poles Available Per Job Spec



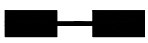


**EPA Rating:**

**EPA of DAB Series**

The height of the pole DAB-A16-50-100W- MCTP-SR	10'	12'	14'	16'	18'	20'
		4	4.47	4.94	5.41	5.88
	3.49	3.96	4.43	4.9	5.37	5.84
	5.6	6.07	6.54	7.01	7.48	7.95

The height of the pole DAB-B20-50-100W- MCTP-SR	10'	12'	14'	16'	18'	20'
		4.13	4.6	5.07	5.54	6.01
	3.56	4.03	5.5	5.97	6.44	6.91
	5.86	6.33	6.8	7.27	7.74	8.21

The height of the pole DAB-B23-80-150W- MCTP-SR	10'	12'	14'	16'	18'	20'
		4.54	5.01	5.48	5.95	6.42
	3.91	4.38	4.85	5.32	5.79	6.26
	6.74	7.21	7.68	8.15	8.62	9.09



**COLOR CHART:** \* Choose from one of our Premium Colors with no set-up fee.

**Gloss:**



SILVER METALLIC  
70 GLOSS  
T357-GR105



SILVER METALLIC  
30 GLOSS  
T353-GR06



DARK RED 90  
GLOSS  
P009-RD02



INTERNATIONAL  
ORANGE 90  
GLOSS  
T009-OG26



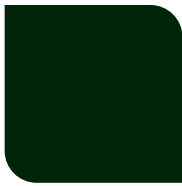
SAFETY ORANGE  
90 GLOSS  
T009-OG01



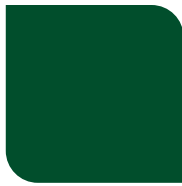
YELLOW 90  
GLOSS  
T009-YL14



YELLOW 90  
GLOSS  
T009-YL01



TRAFFIC GREEN  
70 GLOSS  
T007-GN16



GREEN 70 GLOSS  
T007-GN13



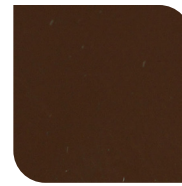
GREEN 60 GLOSS  
C006-GN03



BLUE 90 GLOSS  
T009-BL01



DARK BLUE 80  
GLOSS  
T008-BL20



RAL 8028 TERRA  
BROWN 90 GLOSS  
C209-BR358

**Hammer:**



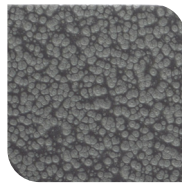
WHITE HAMMER  
T013-WH09



BEIGE HAMMER  
T013-BG38



GREY HAMMER  
C013-GR08



SILVER  
HAMMERTONE  
T064-GR05



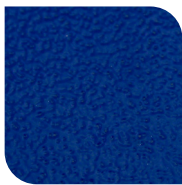
BLACK HAMMER  
T013-BK62



RED HAMMER  
T013-RD15



GREEN HAMMER  
T013-GN220



BLUE HAMMER  
T013-BL468



BRONZE HAMMER  
T012-BR161

**Texture:**



WHITE TEXTURE  
C031-WH120



FLINT GRAY  
TEXTURE  
T243-GR522



BLACK TEXTURE  
C241-BK109



RED TEXTURE  
T241-RD129



BLUE TEXTURE  
C241-BL544

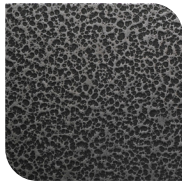


OIL RUBBED  
BRONZE TEXTURE  
T291-BR251

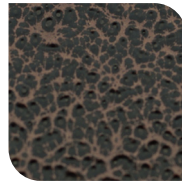
**Vein:**



BLACK/WHITE  
VEIN  
T075-WH34



SILVER VEIN  
T375-BK26



COPPER VEIN  
EXTERIOR  
T075-BK211



GOLD VEIN  
T375-BK10



COPPER VEIN  
T375-BK07

